



CUTTING-EDGE MAPPING AND INTEL SERVICES

What We Do – Rapid assessment and decision support

NorthTree GIS uses maps to connect users to a wide variety of information. We specialize in rapid situation assessment, and in the development of map-based decision support tools. Our products allow wide groups of people to access the information that they need to make informed decisions.

NorthTree GIS has provided onsite emergency mapping services since 1999. In that time we have helped manage over 50 large wildfires and major emergency construction projects. We use aerial photography, GPS, digital photography, and web-based mapping tools to rapidly size-up and communicate dynamic situations.



Qualified Personnel

Working wildfires has taught us good stress management, rock-solid file management, and a lot about how to work with people on tight deadlines. We like to think that these skills set us apart - that our emergency-response skills can help keep your non-emergency project from turning into a disaster.

Our veteran mapping staff have experience ranging from professional cartography to helicopter aerial photography and post-fire severity mapping. All of our core mapping staff have completed the national certification process for Incident GIS Specialist (GISS), and have experience mapping on major wildfire incidents.



Quality Equipment

NorthTree's state-of-the-art Mobile Mapping Units are climate-controlled and designed to accommodate 3-6 Technical Specialists. They feature gigabit networked workstation computers, and have broadband satellite internet systems capable of supporting an entire remote basecamp operation.

GIS Trailer Hardware Includes:

- 3Ghz+ GIS Workstation Computers
- 2 HP Map Plotters
- 11"x17" Laser Printer
- 20" LCD Monitors
- Broadband Satellite Internet

Mapping Software Includes:

- ArcGIS 9.x
- ArcGIS Spatial and 3D Analyst
- Garmin GPS Downloading Software
- Adobe Photoshop
- Microsoft Office



1-800-FIRE-OUT

NorthTree Fire International
10674 Ramirez Road
Marysville, CA 95901

Contact:

GIS Mapping Manager
1.800.FIRE.OUT
gis@northtreefire.com

ABOUT NORTHTREE FIRE

NTFI provides resources and technical services to diverse clients including railroads, utility and pipeline companies, and private individuals. We staff quality equipment with experienced, courageous, and highly skilled people. When our equipment goes out the door, our field personnel are backed up with professional management, knowledgeable mechanics, and a 24/7/365 dispatch center.

PROVEN RESULTS

Our maps give users a common language for discussing and solving problems. The projects below helped land managers and construction bosses make informed decisions about complex problems.

Fire Management Plan for Palo Corona Regional Park

Client - Monterey Peninsula Regional Park District

Date - 2007

Description- Palo Corona Ranch is a new Regional Park covering 4,300 acres south of Carmel, in Monterey County, CA. It abuts densely populated, expensive real estate. Managing wildfire hazard is one of the biggest challenges park managers face.

NorthTree GIS surveyed vegetation, access, weeds, water, and infrastructure, modeled potential fire behavior, and developed firefighting strategies for different scenarios. We delivered this information as maps and a written report.

Sacramento River Watershed Interactive Atlas

Client - Sacramento River Watershed Program

Date - 2008

Description- NorthTree GIS is designing and building an web-based mapping system that allows users to submit, explore, and download information about the 27,000 square mile Sacramento River Watershed.

Web link: <http://www.sacrriver.org>

Frazier Slide Reconstruction Project

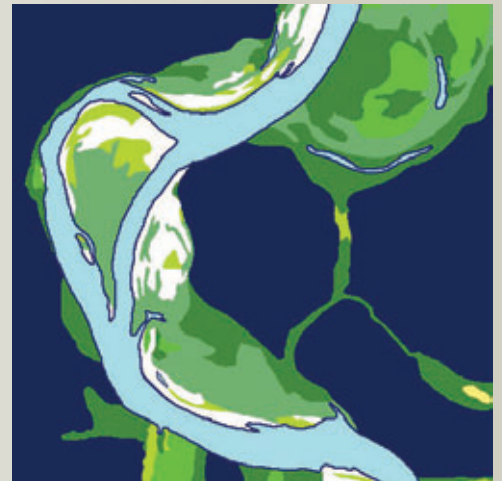
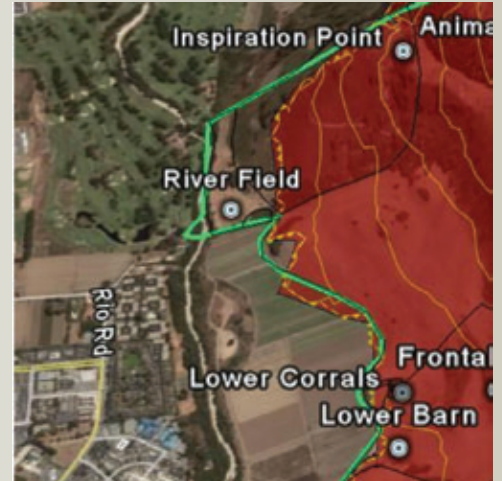
Client - Union Pacific Railroad

Date - 2008

Description - NorthTree is an emergency contractor for Union Pacific. Our maps help UPRR's project managers communicate about complex and dynamic disasters like the 2008 Frazier Slide - which closed UPRR's Oregon Trunk line for over 3 months.

On the Frazier Slide, our role was to facilitate briefings and gather intel on the work progress of over 150 pieces of heavy equipment. Toward this end, we made daily briefing maps, and flew our own aerial photography in a small plane.

You can view various NTFI mapping projects on our website:
<http://www.northtreefire.com/gis>



1-800-FIRE-OUT

NorthTree Fire International
10674 Ramirez Road
Marysville, CA 95901

Contact:

GIS Mapping Manager
1.800.FIRE.OUT
gis@northtreefire.com